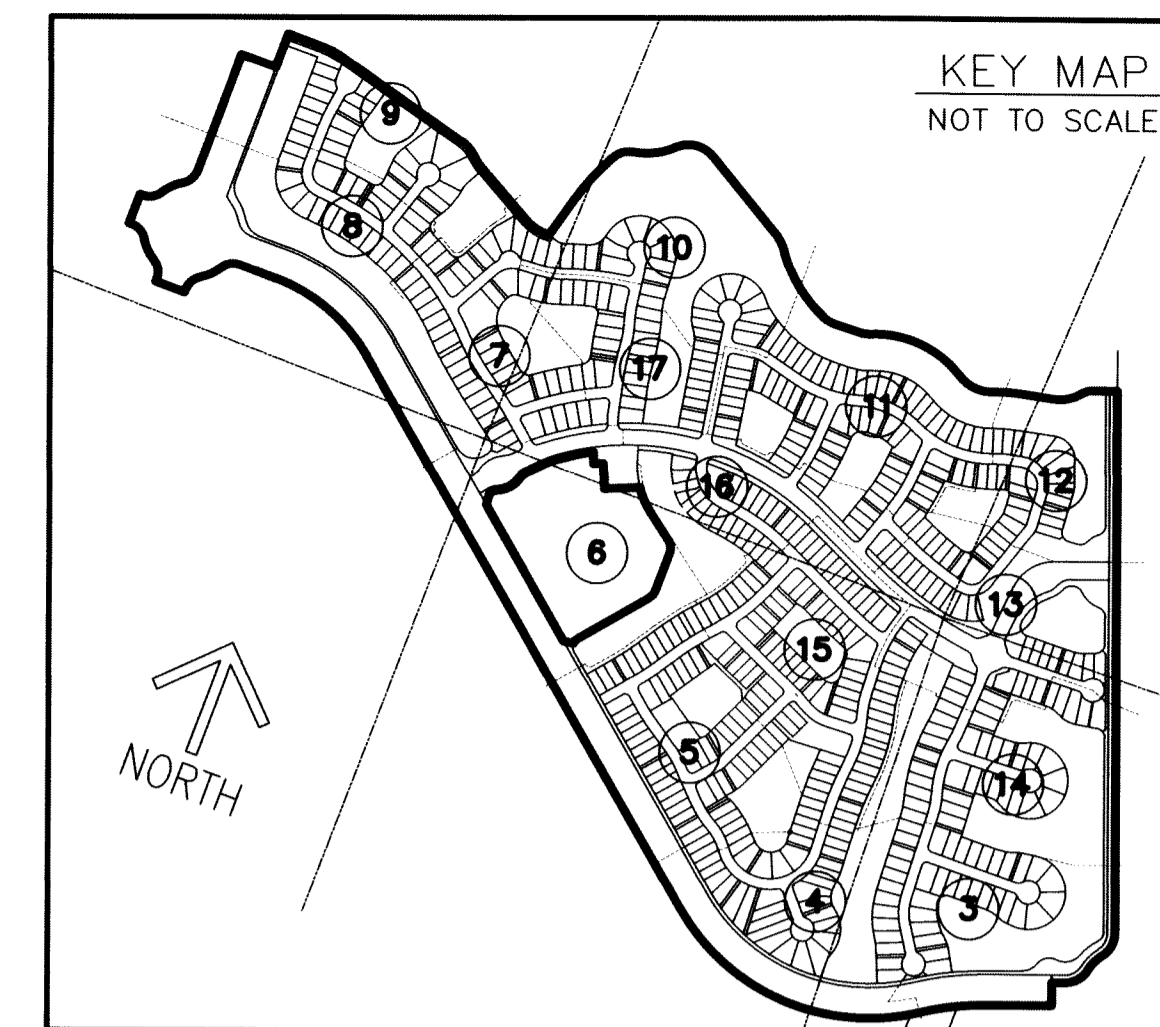


AVENIR - POD 15

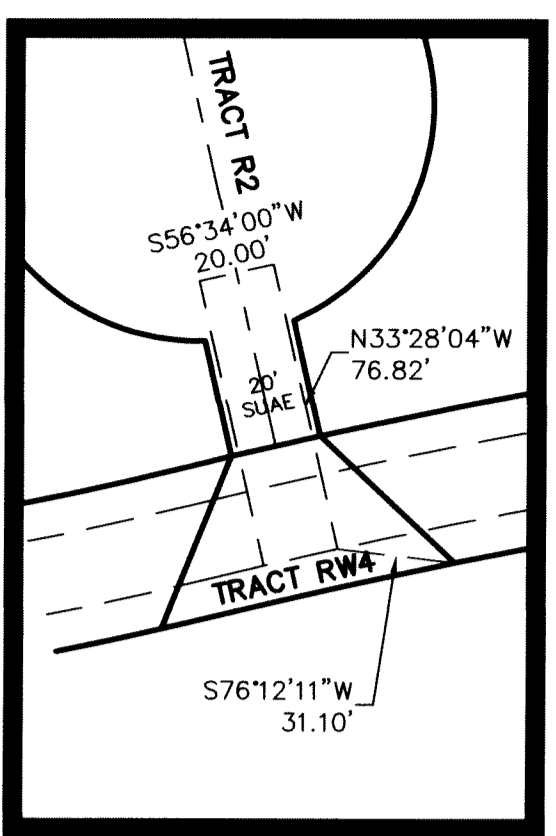
BEING A REPLAT OF A PORTION OF PARCEL A-1, AVENIR, AS RECORDED IN PLAT BOOK 127 PAGE 85, OF THE PUBLIC RECORDS OF PALM BEACH COUNTY, FLORIDA LYING IN SECTIONS 9, 10, 15 AND 16, TOWNSHIP 42 SOUTH, RANGE 41 EAST, CITY OF PALM BEACH GARDENS, PALM BEACH COUNTY, FLORIDA.

THIS INSTRUMENT PREPARED BY
RONNIE L. FURNISS
OF
CAULFIELD and WHEELER, INC.
SURVEYORS - ENGINEERS - PLANNERS
7900 GLADES ROAD, SUITE 100
BOCA RATON, FLORIDA 33434 - (561)392-1991
CERTIFICATE OF AUTHORIZATION NO. LB3591
OCTOBER 2022

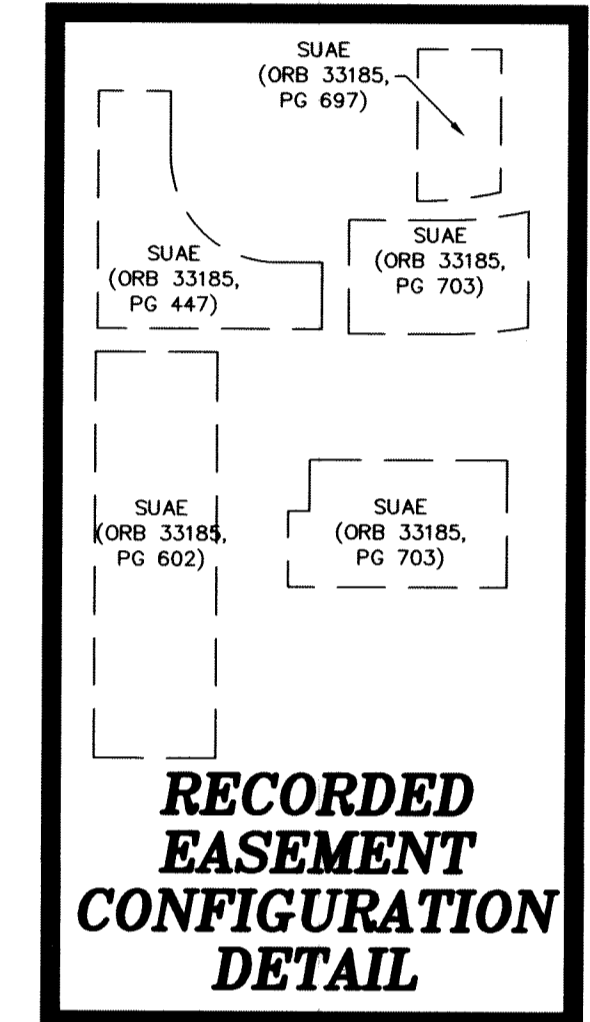


181

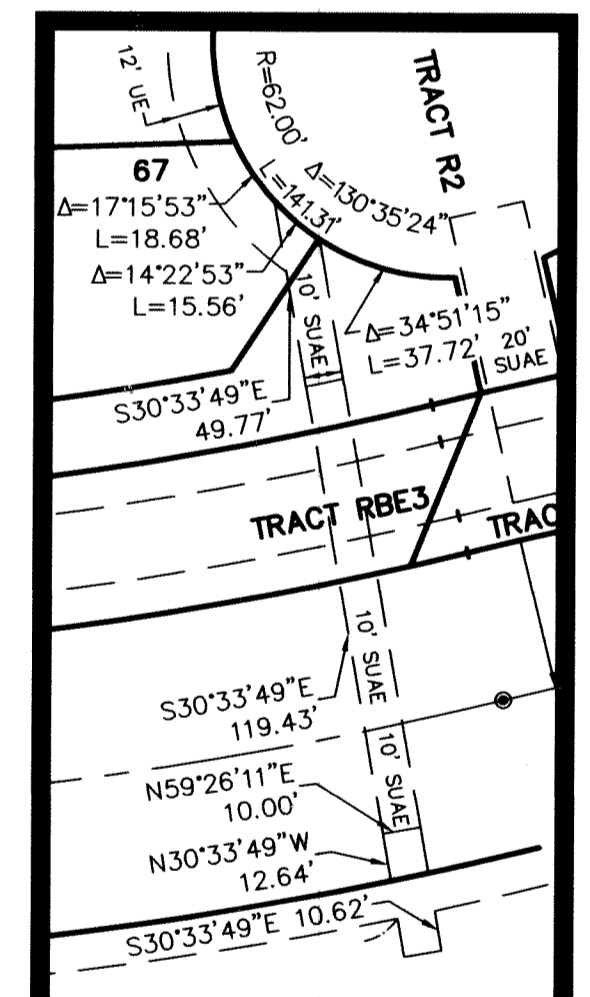
SHEET 3 OF 17



EASEMENT DETAIL

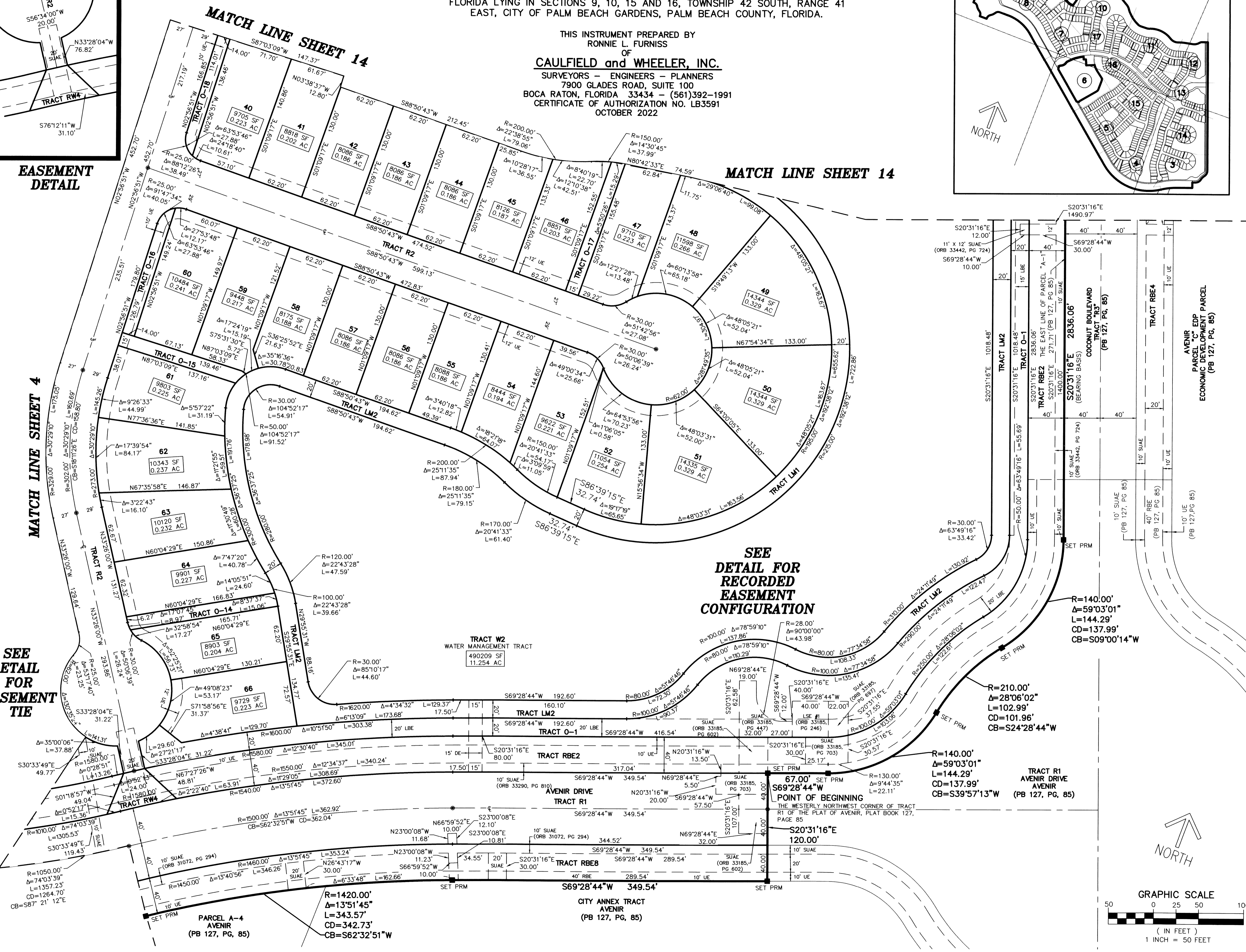
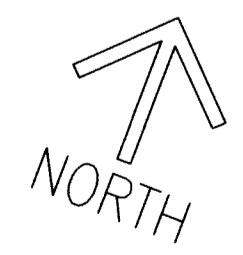
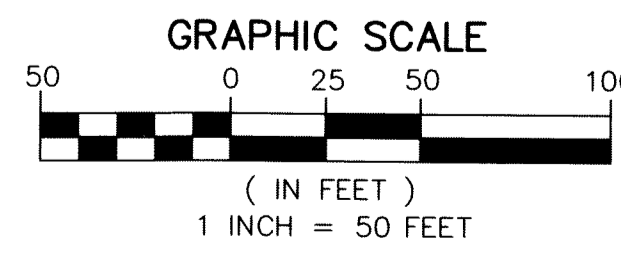


RECORDED EASEMENT CONFIGURATION DETAIL



EASEMENT DETAIL

- LEGEND/ABBREVIATIONS**
- ℄ - CENTERLINE
 - Δ - DELTA (CENTRAL ANGLE)
 - AC - ACRES
 - CB - CHORD BEARING
 - CD - CHORD DISTANCE
 - DE - DRAINAGE EASEMENT
 - EA - EMERGENCY ACCESS EASEMENT
 - L - ARC LENGTH
 - LAE - LIMITED ACCESS EASEMENT
 - LB - LICENSED BUSINESS
 - LBE - LANDSCAPE BUFFER EASEMENT
 - LSE - LIFT STATION EASEMENT
 - O.R.B. - OFFICIAL RECORD BOOK
 - PL - PLAT BOOK
 - PG - PAGE
 - P.P.A.E. - PERPETUAL PUBLIC ACCESS EASEMENT
 - R - RADIUS
 - (R) - INDICATES RADIAL LINE
 - RB - INDICATES RADIAL BEARING
 - RBE - ROADWAY BUFFER EASEMENT
 - SF - SQUARE FEET
 - SUA.E. - SEACOAST UTILITY AUTHORITY EASEMENT
 - UE - UTILITY EASEMENT
 - DENOTES PERMANENT REFERENCE MONUMENT
 - 5/8" IRON ROD WITH CAP STAMPED "C&W PRM LB 3591"
 - - DENOTES PERMANENT CONTROL POINT
 - ⊕ - 1/4 SECTION CORNER
 - ⊗ - SECTION CORNER



SEE
DETAIL FOR
RECORDED
EASEMENT
CONFIGURATION

SEE
DETAIL
FOR
EASEMENT
TIE

MATCH LINE SHEET 4

MATCH LINE SHEET 14

MATCH LINE SHEET 14

SEE
DETAIL
FOR
EASEMENT
TIE

MATCH LINE SHEET 4

MATCH LINE SHEET 14

MATCH LINE SHEET 14

SEE
DETAIL
FOR
EASEMENT
TIE

MATCH LINE SHEET 4

MATCH LINE SHEET 14

MATCH LINE SHEET 14